



Pictou-Antigonish  
Regional Library



Invitations to submit  
**Expressions of Interest**  
for artistic and artisan elements  
for the Pictou Culture Hub:  
New Pictou Library and Renovated deCoste Theatre

**Deadline for Stage One submissions:**

**Friday, September 15, 4:00 pm.**

**Electronic or hard copy submission accepted**

Submit to:

Artists and Artisans Review Panel  
Care of, Eric Stackhouse, Chief Librarian  
182 Dalhousie Street, New Glasgow  
PO Box 276  
New Glasgow, NS, B2H 5E3  
expressions@parl.ns.ca

Questions can be directed to Eric Stackhouse, Chief Librarian, or Trecia Schell, Community Services Librarian, Pictou-Antigonish Regional Library (902) 755-6031 or toll free 1-866-779-7761.

Information about the Pictou Culture Hub can be found at [www.culturehubpc.ca](http://www.culturehubpc.ca).



## Background

The Artists and Artisans Review Panel are inviting ***Expressions of Interest*** from the artistic and artisan community for several **original\*** elements to be part of the project. The Committee represents the Town of Pictou, the Municipality of Pictou County, the Pictou-Antigonish Regional Library, the deCoste Centre for Arts and Creativity, and includes Dale Archibald of Archibald and Fraser Architects Ltd.

Key themes in the Culture Hub Project include:

- A welcoming space for everyone to come together – residents, newcomers, all ages, backgrounds, and abilities.
- Respect and celebration of all histories, cultures, and experiences in the wider community.
- Stewardship of our community, socially, culturally, economically, and environmentally.
- A celebration of arts and culture, including the written word and language, to transform and enrich lives.

More information and a building and site plans can be found at [www.culturehubpc.ca](http://www.culturehubpc.ca).

\* While the panel recognizes there are many worthwhile works of art held by artists, collectors, and galleries, the goal is to showcase original artwork created specifically for this project.

Construction is now underway with completion by Spring 2024. All elements will need to be completed and installed for opening day unless arrangements are made otherwise.

It is recognized installation of each piece will require working closely with the architect and contractor. This will be arranged, and any special installation requirements, as part of the project/artist contract.

Review Panel members working on behalf of the Project Working Committee:

- Carissa Ainslie
- Dale Archibald
- Dan Currie
- Cheryl Denny
- Crystal Murray
- Debby Sobey
- Andrea Terry
- Debi Wadden

Support staff:

- Eric Stackhouse
- Trecia Schell

## Specific elements being considered:

### 1. Exterior pieces (4).

Approximate locations, please see [Appendix A](#) for details:

1. Water Street Patio;
2. Harbourside Entrance or Patio;
3. Near the Harbour Stair (this element to be reflective of the harbour and water in some way);
4. Entrance to the Jitney Trail (this element to be reflective of the history and use of the Jitney Trail).

Size of area: Approximate footprint is 3 feet by 3 feet for each.

Form: Material must be durable, easily maintained, suitable and safe for high traffic public area. 2D or 3D possible.

### 2. 2 Exterior maps of unique design.

Location: Water Street entrance to building.

Dimensions of each map: 3 feet wide by 2 feet high each.

Concept: Interesting design (example – bird’s eye view) that is clear but colourful and creative: one of the area encompassing the Municipality of Pictou County indicating major roads and communities, and one of the Town of Pictou indicating prominent places and streets. The maps must be respectful and inclusive of the ancestral lands and names of indigenous communities.

Form: Adobe Photoshop format at high resolution. To be printed on ceramic coated steel in full colour (by Committee).

### 3. Large mural.

Location: To be located on the bulkhead that runs above circulation desk. (See [Appendix E](#) for details.)

Dimensions: 4 feet high by 60 feet wide curved band above circulation desk.

Concept: Interesting design that is colourful and creative and represents all communities and cultures in Pictou, past and present.

Form: Mural must be on removable panels. Architect will assist in 3D modeling this piece.

### 4. Banners.

Location: Up to 6 banners (dependent on size) to hang from ceiling in the Sunrise Reading Area. (See [Appendix B](#) for details).

Dimensions: 3 feet x 5 feet

Concept: Creative.

Form: Original artwork to be created, scanned, and transferred to durable hanging material. Library staff have assisted in this process previously with the Flag Shop.

## **5. Fireplace surround.**

Location: Fireplace surrounding the electric fireplace opening. (See [Appendix D](#) for details).

Dimensions: Fireplace immediately surrounding the opening and/or wall space around the Fireplace.

Concept: A Celtic theme.

Form: Handcrafted ceramic (or other composition) tiles of a durable nature, wood or stone carving, or other 3-dimensional piece.

## **6. Series of 8 End of shelving panels**

Location: To be mounted at the end of each shelving bay run (8 in total). (See [Appendix C](#) for details).

Dimensions: 64 inches high by 20 3/4 inches wide. Depth depends if mounted on existing panel or the work is the end panel (preferred).

Concept: Each end panel can be a unique creation but all should create a theme. Suitable for several artists to collaborate.

Form: Must be extremely durable material as could be bumped by strollers, book carts, etc.

## **7. Children's Area**

Location: Children's area. (See [Appendix B](#) for details).

Dimensions: Wall space. Up to 4 feet by 8 feet.

Concept: One child envisioned this space with "Lots of rainbows.". We would like to pick up on that theme of colour and imagination.

Form: This would be a wall mounted piece above a 40-inch-high shelving unit.

## **8. Piece for Community Technology Area.**

Location: Community Technology Area. (See [Appendix B](#) for details).

Dimensions: Wall space is 6 feet wide by 4 feet high.

Concept: Using technology to develop an interactive art piece for the public.

Form: Audio / visual / or other digital piece.

Requirement: Please include a maintenance plan for ongoing use of the piece if appropriate.

## **9. Creative element.**

Location: Exterior and interior.

Dimensions: Please refer to floor and elevation plans available at [www.culturehubpc.ca](http://www.culturehubpc.ca).

Concept: The purpose is to allow the artist or artisan to develop their own piece based upon the overall concept of the project.

Form: To be determined by the artist or artisan.

**There will be three stages in the selection of artists and artisans.**

## **Stage One:**

The applicant must submit the following in their Expression of Interest:

1. Resume (1-2 pages maximum).
2. Examples of relevant work (3-5 pieces maximum).
3. Summary of how you would respond conceptually to the project including why this project interests you (2 pages maximum)
4. Initial idea(s) for the work and should include likely proposed materials (1-2 pages per element).
5. Estimated timeline and estimated budget (including installation if appropriate).

Stage One Expressions of Interest will be assessed by the Review Panel on the following criteria:

- Previous work and ability to undertake projects.
- Relevance and appropriateness of proposed work to the Culture Hub Project and the themes mentioned above.
- Degree of understanding of the specific project and its aim.
- Evidence of carrying out a project in a timely manner and with diligence to the budget.

## **Stage Two:**

After this assessment selected artists and artisans will be invited to undertake a design development process that will allow for a complete preparation of the work. \$500 will be provided to undertake this process. The following will be expected as outcomes:

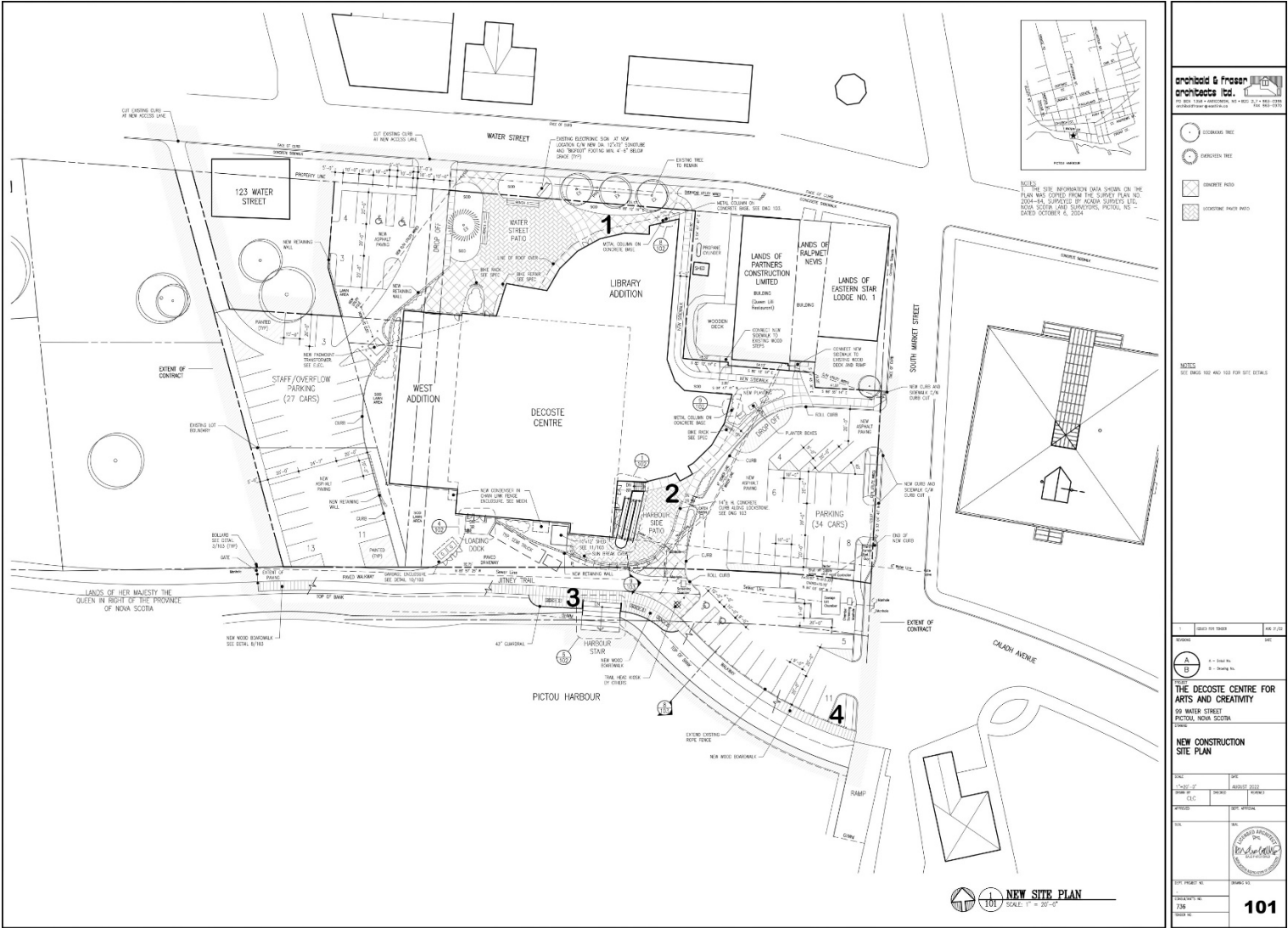
1. A clear understanding of the work to be completed.
2. Detailed explanation of the media and the style.
3. Draft concept of the work including draft sketches, models, or samples that illustrate the work to be completed, including:
  - Detail of the material, technique, and if applicable the manufacture.
  - Detailed schedule of work.
  - Any applicable research.
  - Detail of installation and any ongoing maintenance.
  - All draft conceptual work will remain the property of the artist or artisan.
4. Budget including installation if appropriate.
5. A 20-minute presentation by the artist or artisan to the Review Panel if requested.

**PLEASE NOTE:** The Review Panel reserves the right for artists to move from Stage One to Stage Three without further assessment, should the artwork concepts provided in Stage One are sufficiently detailed for the committee to review and assess. \*The Committee reserves the right to stop work at Stage Two.

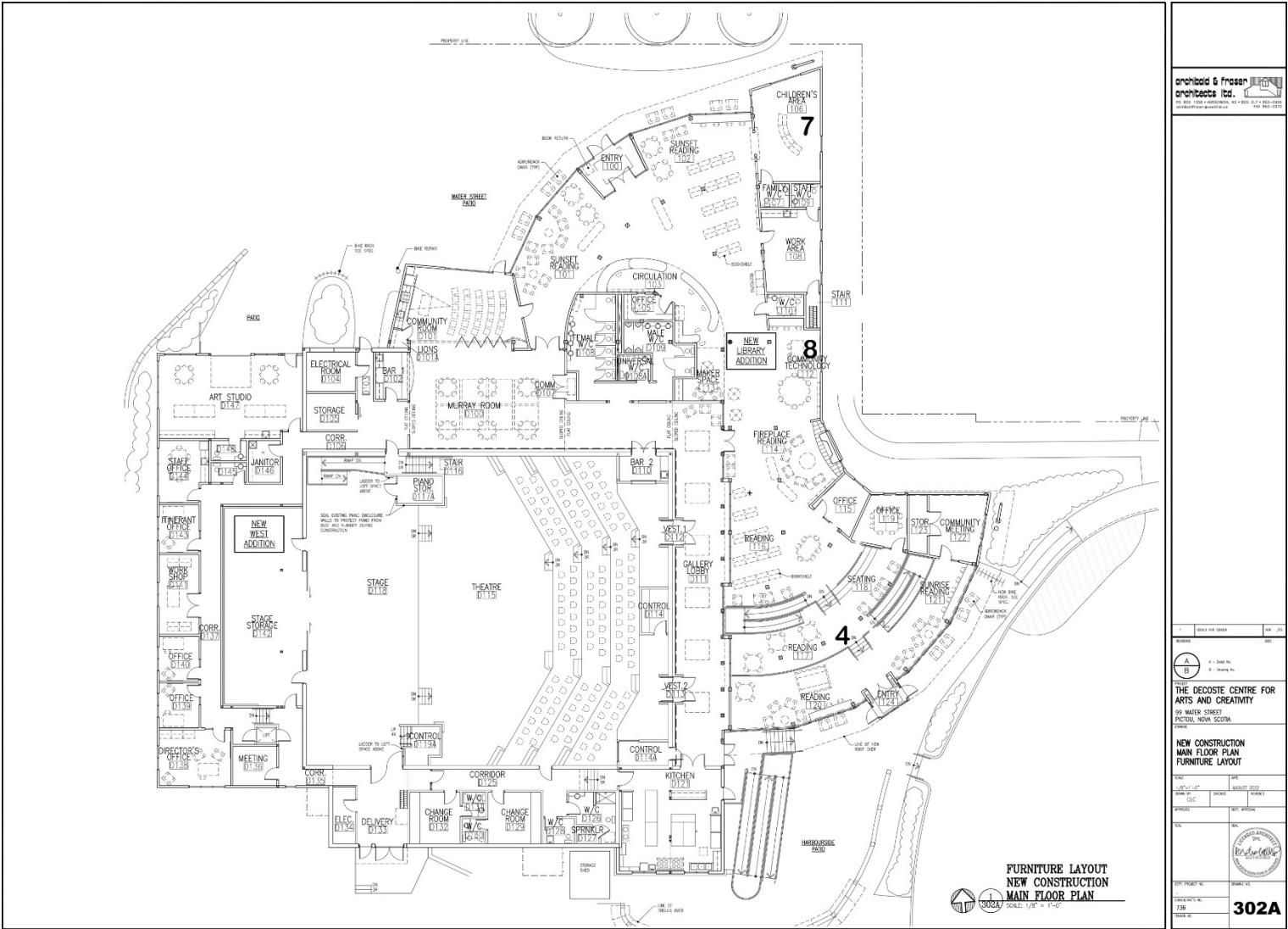
## **Stage Three:**

Artist or artisan will then be approved to begin work. Intellectual and artistic rights, as well as final price, payment schedule, and installation specifics, will be negotiated in Stage Three. The Project will be the owner of the work when complete.

Appendix A



Appendix B



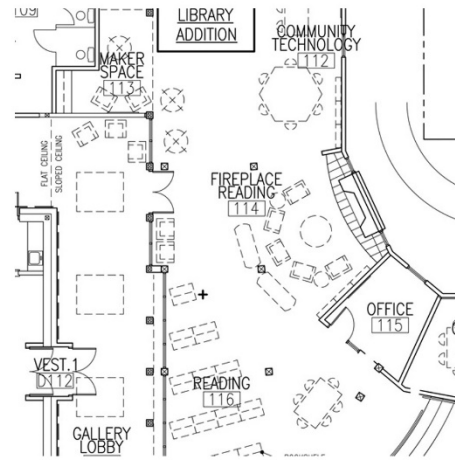
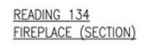
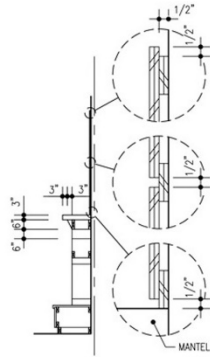
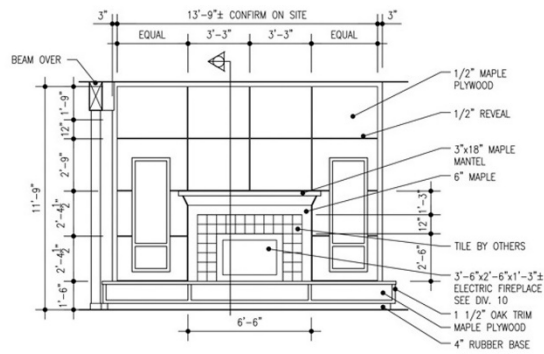
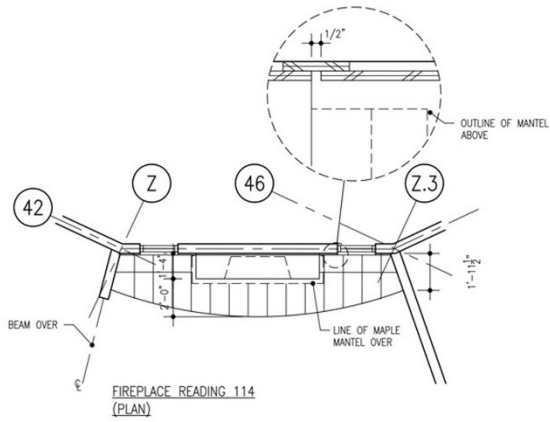
The main floor plan of The Decoste Centre for Arts and Creativity is a detailed architectural drawing showing the furniture layout for the new construction. The plan includes various rooms such as the Theatre, Studio, Office, and Reading areas. Two specific areas are highlighted with arrows and the text "End of Shelving Panels".

**Rooms and Areas:**

- ART STUDIO (D147)
- STAFF OFFICE (D148)
- FINANCIAL OFFICE (D149)
- WORK SHOP (D150)
- OFFICE (D151)
- DIRECTOR'S OFFICE (D152)
- MEETING (D153)
- STAGE (D154)
- THEATRE (D155)
- CONTROL (D156)
- DELIVERY (D157)
- CHANGE ROOM (D158)
- W/C (D159)
- W/C (D160)
- W/C (D161)
- W/C (D162)
- W/C (D163)
- W/C (D164)
- W/C (D165)
- W/C (D166)
- W/C (D167)
- W/C (D168)
- W/C (D169)
- W/C (D170)
- W/C (D171)
- W/C (D172)
- W/C (D173)
- W/C (D174)
- W/C (D175)
- W/C (D176)
- W/C (D177)
- W/C (D178)
- W/C (D179)
- W/C (D180)
- W/C (D181)
- W/C (D182)
- W/C (D183)
- W/C (D184)
- W/C (D185)
- W/C (D186)
- W/C (D187)
- W/C (D188)
- W/C (D189)
- W/C (D190)
- W/C (D191)
- W/C (D192)
- W/C (D193)
- W/C (D194)
- W/C (D195)
- W/C (D196)
- W/C (D197)
- W/C (D198)
- W/C (D199)
- W/C (D200)
- W/C (D201)
- W/C (D202)
- W/C (D203)
- W/C (D204)
- W/C (D205)
- W/C (D206)
- W/C (D207)
- W/C (D208)
- W/C (D209)
- W/C (D210)
- W/C (D211)
- W/C (D212)
- W/C (D213)
- W/C (D214)
- W/C (D215)
- W/C (D216)
- W/C (D217)
- W/C (D218)
- W/C (D219)
- W/C (D220)
- W/C (D221)
- W/C (D222)
- W/C (D223)
- W/C (D224)
- W/C (D225)
- W/C (D226)
- W/C (D227)
- W/C (D228)
- W/C (D229)
- W/C (D230)
- W/C (D231)
- W/C (D232)
- W/C (D233)
- W/C (D234)
- W/C (D235)
- W/C (D236)
- W/C (D237)
- W/C (D238)
- W/C (D239)
- W/C (D240)
- W/C (D241)
- W/C (D242)
- W/C (D243)
- W/C (D244)
- W/C (D245)
- W/C (D246)
- W/C (D247)
- W/C (D248)
- W/C (D249)
- W/C (D250)
- W/C (D251)
- W/C (D252)
- W/C (D253)
- W/C (D254)
- W/C (D255)
- W/C (D256)
- W/C (D257)
- W/C (D258)
- W/C (D259)
- W/C (D260)
- W/C (D261)
- W/C (D262)
- W/C (D263)
- W/C (D264)
- W/C (D265)
- W/C (D266)
- W/C (D267)
- W/C (D268)
- W/C (D269)
- W/C (D270)
- W/C (D271)
- W/C (D272)
- W/C (D273)
- W/C (D274)
- W/C (D275)
- W/C (D276)
- W/C (D277)
- W/C (D278)
- W/C (D279)
- W/C (D280)
- W/C (D281)
- W/C (D282)
- W/C (D283)
- W/C (D284)
- W/C (D285)
- W/C (D286)
- W/C (D287)
- W/C (D288)
- W/C (D289)
- W/C (D290)
- W/C (D291)
- W/C (D292)
- W/C (D293)
- W/C (D294)
- W/C (D295)
- W/C (D296)
- W/C (D297)
- W/C (D298)
- W/C (D299)
- W/C (D300)
- W/C (D301)
- W/C (D302)
- W/C (D303)
- W/C (D304)
- W/C (D305)
- W/C (D306)
- W/C (D307)
- W/C (D308)
- W/C (D309)
- W/C (D310)
- W/C (D311)
- W/C (D312)
- W/C (D313)
- W/C (D314)
- W/C (D315)
- W/C (D316)
- W/C (D317)
- W/C (D318)
- W/C (D319)
- W/C (D320)
- W/C (D321)
- W/C (D322)
- W/C (D323)
- W/C (D324)
- W/C (D325)
- W/C (D326)
- W/C (D327)
- W/C (D328)
- W/C (D329)
- W/C (D330)
- W/C (D331)
- W/C (D332)
- W/C (D333)
- W/C (D334)
- W/C (D335)
- W/C (D336)
- W/C (D337)
- W/C (D338)
- W/C (D339)
- W/C (D340)
- W/C (D341)
- W/C (D342)
- W/C (D343)
- W/C (D344)
- W/C (D345)
- W/C (D346)
- W/C (D347)
- W/C (D348)
- W/C (D349)
- W/C (D350)
- W/C (D351)
- W/C (D352)
- W/C (D353)
- W/C (D354)
- W/C (D355)
- W/C (D356)
- W/C (D357)
- W/C (D358)
- W/C (D359)
- W/C (D360)
- W/C (D361)
- W/C (D362)
- W/C (D363)
- W/C (D364)
- W/C (D365)
- W/C (D366)
- W/C (D367)
- W/C (D368)
- W/C (D369)
- W/C (D370)
- W/C (D371)
- W/C (D372)
- W/C (D373)
- W/C (D374)
- W/C (D375)
- W/C (D376)
- W/C (D377)
- W/C (D378)
- W/C (D379)
- W/C (D380)
- W/C (D381)
- W/C (D382)
- W/C (D383)
- W/C (D384)
- W/C (D385)
- W/C (D386)
- W/C (D387)
- W/C (D388)
- W/C (D389)
- W/C (D390)
- W/C (D391)
- W/C (D392)
- W/C (D393)
- W/C (D394)
- W/C (D395)
- W/C (D396)
- W/C (D397)
- W/C (D398)
- W/C (D399)
- W/C (D400)
- W/C (D401)
- W/C (D402)
- W/C (D403)
- W/C (D404)
- W/C (D405)
- W/C (D406)
- W/C (D407)
- W/C (D408)
- W/C (D409)
- W/C (D410)
- W/C (D411)
- W/C (D412)
- W/C (D413)
- W/C (D414)
- W/C (D415)
- W/C (D416)
- W/C (D417)
- W/C (D418)
- W/C (D419)
- W/C (D420)
- W/C (D421)
- W/C (D422)
- W/C (D423)
- W/C (D424)
- W/C (D425)
- W/C (D426)
- W/C (D427)
- W/C (D428)
- W/C (D429)
- W/C (D430)
- W/C (D431)
- W/C (D432)
- W/C (D433)
- W/C (D434)
- W/C (D435)
- W/C (D436)
- W/C (D437)
- W/C (D438)
- W/C (D439)
- W/C (D440)
- W/C (D441)
- W/C (D442)
- W/C (D443)
- W/C (D444)
- W/C (D445)
- W/C (D446)
- W/C (D447)
- W/C (D448)
- W/C (D449)
- W/C (D4



## Appendix D



Appendix E

